

BS



BS 11

BS 15

BS 18

BS 24

BS 30

BS 36

BS 43

Cooling capacity (1)	kW	3.23	3.8	5.52	6.59	8.5	10.26	12.6
Power input	kW	1.31	1.7	2.24	2.93	3.52	3.84	5.18
Airflows (LS/MS/HS)	m ³ /h	420/480/520	530/570/610	570/630/680	910/1035/1120	1040/1150/1300	1175/1380/1535	1430/1600/1765
Available static pressure (LS/MS/HS)	daPa	3.2/3.8/4.3	3.8/4.5/5	3/3.5/4	2.4/3.2/4	2/3/4	3.7/7	5/9
Acoustic pressure at 1 m (3)								
Indoor unit (Fan/motor assy.)	dB(A)	37	40	41	41	43	54.5	64
Outdoor unit	dB(A)	53	54	47	47	62	62	64

Power supply

- 1 ~ 230 V - 50 Hz

Motor fuse rating (1-230 V)	A	8	12	16	20	25	-	-
Power cable section (without heating)	mm ²		3x1.5	3x1.5	3x1.5	3x2.5	-	-
Power supply side		Indoor unit	Indoor unit	In or outdoor unit	In or outdoor unit	Outdoor unit	-	-

- 3N ~ 380 V - 50 Hz

Motor fuse rating (3-400 V)	A	-	-	8	10	12	12	16
Power cable section (without heating)	mm ²	-	-	-	5x1.5	5x1.5	5x1.5	5x1.5
Power supply side		-	-	-	Outdoor unit	Outdoor unit	Outdoor unit	Outdoor unit
Compressor type		Rotary	Rotary	Scroll	Scroll	Scroll	Scroll	Scroll
Refrigerant					R407C			
Operating limits - Winter / Summer					- 10 °C / + 43 °C			

Linking specification between indoor and outdoor units

Linking pipes (not supplied)

Maximum pipe length	m	20	20	15	30	30	50	50
Maximum height difference	m	7	15	10	10	10	25	25
Liquid pipe diameter	Inchs	1/4"	1/4"	3/8"	3/8"	3/8"	3/8"	3/8"
Suction pipe diameter	Inchs	1/2"	1/2"	5/8"	5/8"	5/8"	3/4"	3/4"

Electrical connections (not supplied)

1 ~ 230 V version	mm ²	5x1.5	5x1.5	5x1.5	5x1.5	5x1.5	-	-
3N ~ 400 V version	mm ²	-	-	5x1.5	5x1.5	5x1.5	5x1.5	5x1.5

BS RC



BS 11 RC

BS 15 RC

BS 18 RC

BS 24 RC

BS 30 RC

BS 36 RC

BS 43 RC

Cooling capacity (1)	kW	3.23	3.8	5.52	6.59	8.5	10.26	12.6
Power input	kW	1.31	1.7	2.24	2.93	3.52	3.84	5.18

Heating capacity (2)

Power input	kW	1.32	1.66	2.11	2.78	3.36	4.04	5.36
-------------	----	------	------	------	------	------	------	------

Linking specification between indoor and outdoor units

Linking pipes (not supplied)

Maximum pipe length	m	20	20	15	30	30	50	50
Maximum height difference	m	7	15	10	10	10	25	25
Liquid pipe diameter	Inchs	1/4"	1/4"	3/8"	3/8"	3/8"	3/8"	3/8"
Suction pipe diameter	Inchs	1/2"	1/2"	5/8"	5/8"	5/8"	3/4"	3/4"

Electrical connections (not supplied)

1 ~ 230 V version	mm ²	6x1.5	6x1.5	6x1.5	6x1.5	6x1.5	-	-
3N ~ 400 V version	mm ²	-	-	6x1.5	6x1.5	6x1.5	6x1.5	6x1.5

Accessories for models

Single phase electric heating	W	1600	1600	1900 (4)	4000 (5)	4000 (5)	-	-
N° 1 cassette air intake plenum kit	o	o	o	o	o	o	-	-
N° 2 cassette air intake plenum kit	o	o	o	o	o	o	-	-

Dimensions and weights

Indoor unit

Weight	kg	39	39	39	66	66	32	40
Dimensions (LxDxH)	mm	860x675x245	860x675x245	860x675x245	1190x675x270	1190x675x270	1100x475x300	1100x475x300

Outdoor unit

Weight	kg	38	41	56	58	82	93	95
Dimensions (LxDxH)	mm	795x290x610	795x290x610	850x370x690	850x370x690	900x340x860	900x340x970	900x350x970

NOTES: All values are specified for a 230 V or 3N 400 V - 50 Hz supply voltage.

(1) **Nominal cooling capacity:** International conditions: 27° C / 19° C (wet bulb) - outdoor air temperature 35° C / 24° C (wet bulb) (Standards NF EN 255.2 - NF EN 814.2).

(2) **Nominal heating capacity:** International conditions: 20° C / 12° C (wet bulb) - outside air temperature 7° C / 6° C (wet bulb) (Standards NF EN 255.2 - NF EN 514.2).

(3) **Acoustic levels:** Global acoustic pressure in dBA (1m) under nominal conditions: outdoor unit in an open area against a reflective background - indoor unit: installations in an average sized room (LS - 0.5 s reverberations).

(4) **Accessories:** Single heating fitted to three phase unit.

(5) **Accessories:** Identical model for single and three phase unit.



ACE
Marketing



ACE
Industrie



ACE - I bis, av. du 8 mai 1945 - Saint-Quentin-en-Yvelines
F - 78284 Guyancourt Cedex
Fax : +33 (0) | 39 44 | 55 - Tel. : +33 (0) | 39 44 78 00
www.airwell.com

Your approved **Airwell** distributor

Airwell
Air Conditioning



customised



Split-System BS Ducted units



Cooling only



Heat pump



R407C

discreet

flexible



Airwell
Air Conditioning

D U C T E D R A N G E

The BS SPLIT-SYSTEM DUCTED range offers a multitude of air distribution solutions. The design freedom epitomised by this range enables truly "customised" installations to be created,

DISCREET SUSPENDED CEILING MOUNTING

The BS SPLIT-SYSTEM DUCTED range has been designed to meet a multitude of dimensional constraints. Being ultra-slim, these units can be easily built in to all types of suspended ceilings, even in the tightest spaces.

DESIGN FREEDOM

By offering air distribution by direct blowing or via a duct network, the BS SPLIT-SYSTEM DUCTED range offers unequalled design freedom. You have complete freedom to choose the location of both air intakes and air outlets.

INSTALLATION FLEXIBILITY

Thanks to the available static pressure the rectangular or circular duct network can be adapted precisely to the layout of all types of premises, even the most complex. With linking pipe lengths of up to 50 m, depending on the models, the BS SPLIT-SYSTEM range offers unrivalled flexibility in terms of installation of both outdoor and indoor units.

VERTICAL MOUNTING POSSIBLE FOR MODELS 11 TO 30.

HORIZONTAL MOUNTING ONLY FOR MODELS 36 TO 43.

advantages

being perfectly adapted to the layout and the configuration of the premises to be air conditioned. Available in "Cooling only" or "Heat pump" versions compatible with water or air condenser units, this range is capable of meeting all tertiary sector air conditioning requirements.

■ Outdoor units



■ BS 11/15/18

Application domains

Restaurants
Hotels
Cafés



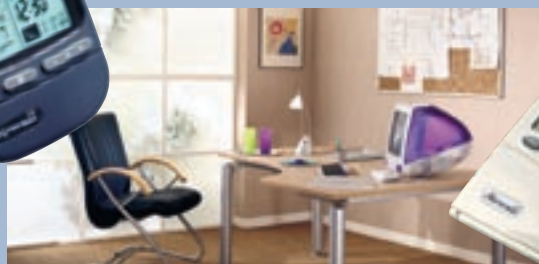
Shops

Offices



Infrared remote control

Range of up to 8 metres

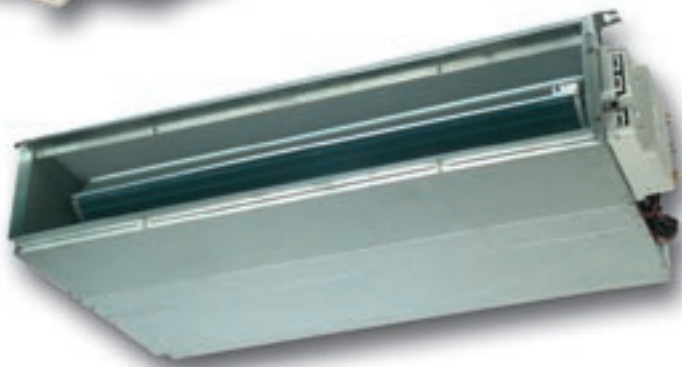


Wall mounted remote control

Available as an accessory: hardwired control
Possibility of controlling up to indoor 32 units
(in 15 different zones).



■ Indoor units



■ BS 24/30

Evolution, innovation

High performance indoor units:

The indoor units offer a host of functions: multi-speed ventilation, temperature regulation via adjustable thermostat, air filters...

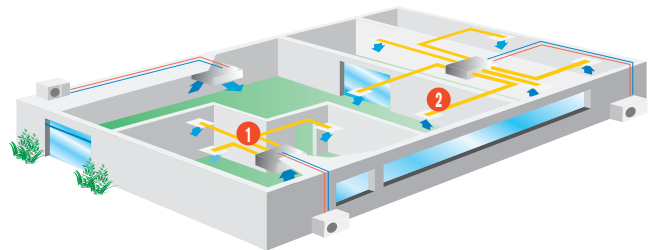


Reliable outdoor condenser units:

Outdoor units are treated with anti-corrosion protection. Their low fan speed guarantees discreet and economical operation.

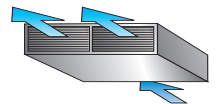
Configuration possibilities:

Thanks to a vast range of standard and interchangeable accessories, the BS indoor units provide numerous installation and air distribution possibilities.



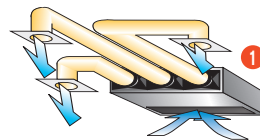
Direct blowing

Base unit + rectangular duct connection on air blowing outlet and air return inlet.

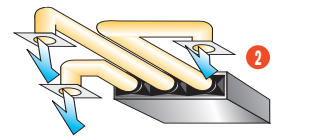


Ducted blowing

Base unit + multi-zone duct blowing connection.



+ cassette return plenum under the unit



+ return duct network plenum connection

Grilles and duct not supplied

A choice of multi-function remote controls with leading edge ergonomic design

- Automatic cooling / Heating regulation.
- 3 ventilation (fan) speeds.
- Automatic ventilation.
- "I Feel" function.
- Night time slow running.
- Dehumidification.
- 2 programming ranges: week and weekend.
- Backlit LCD screen.

Infrared receiver for remote control



COOL: Cooling mode light.
HEAT: Heating mode light.
OPER: Operating light. Lights up when the unit is running. Flashes to confirm receipt of an infrared signal.
STBY: Standby light. Lights up when the system is connected and ready to receive instructions from the remote control.
MODE: Emergency control. Pressing this key enables the Heating and Cooling functions to be selected in the event of the remote control not being available.



Connection box

Connection board with terminals for connection the infrared receiver.